

## Dentapreg™ Bridge - Procedures

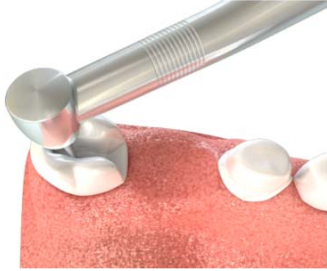

### Basic Procedures in Short

Creating bridge framework with **Dentapreg™ strip** always includes several basic procedures repeated in all particular clinical situations:

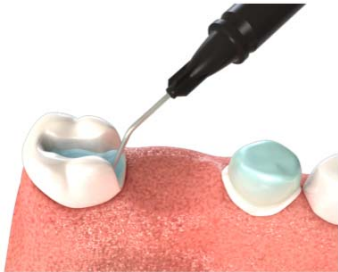
- (A) Clean the bonding surface of abutment teeth
- (B) Maintain dry field during all procedures of placement the bridgework
- (C) Acid etch the bonding surface using common commercial etching gels or liquids
- (D) Apply thin layer of a desired adhesive and cure
- (E) Form and bond **Dentapreg™ Bridge**, cure it
- (F) Finish the bridgework

### Detailed Step-by Step Instruction for FPD – Direct

#### Framework for Direct, Inlay-Crown Bridge in the Lateral Area

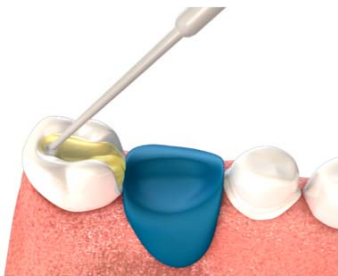
<b>Office/Clinic</b>	<b>Step 1: Teeth Preparation</b>
	<ul style="list-style-type: none"><li>• Prepare the surface of abutment teeth in the usual way</li></ul>
<b>Step 2: Measure the Length of Dentapreg™ Bridge</b>	
	<ul style="list-style-type: none"><li>• Use dental floss or wax rope for this measurement</li><li>• Measure the required length of the Dentapreg™ strip. The length of the strip should be slightly longer than the final length of the framework to accommodate for the adaptation</li></ul>

### Step 3: Prepare the Tooth Surface for Bridge Framework



- Etch the bonding surface of the teeth for approx. 30 second (37% phosphoric acid etching agent)
- Rinse throughoutly and gently dry with a flow of dry air

### Step 4: Apply Adhesive



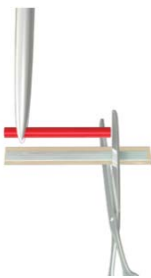
- Apply adhesive according to manufacturer instructions
- Apply a thin layer of hybrid/flowable composite<sup>1)</sup> along desired framework area.
- Do not light cure!



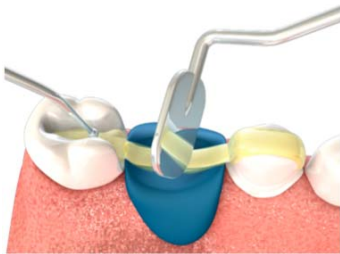
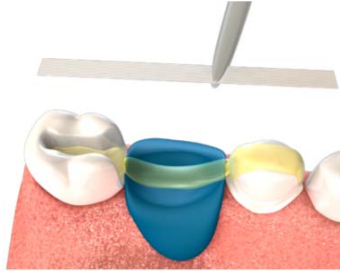
## Step 6: Prepare Dentapreg™ Bridge Strip



- Separate the single strip from the blister breaking the perforated ligament similarly to blister packaged drugs
- Use sharp instrument (scissors, knife, razor blade, scalpel) to open the aluminum foil along three sides
- Remove the strip from the blister, cut the strip with regular scissors and peel back the waxed paper and transparent foil
- Place the trimmed strip into the light save box. This will prevent premature polymerization of the strip.

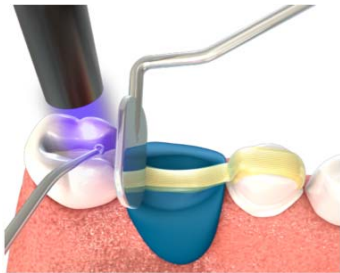


### Step 7: Adaptation of Dentapreg™ Strip



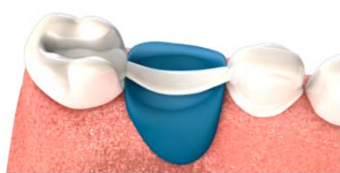
- Place and adapt trimmed **Dentapreg™** strip against surfaces of the prepared teeth (you can adapt it with or without protective transparent foil; in case you adapt it with transparent foil non protected side of strip must be applied on the teeth surfaces)
- Sink the **Dentapreg™** strip into the layer of hybrid/flowable composite and adapt the contours for maximal patient comfort

### Step 8: Light Curing

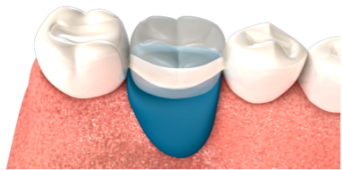


- Light cure the strip. When using common light curing lamp light cure Dentapreg™ strip for 30 - 40 seconds.
- Use the forming instrument to prevent rest of the strip from curing light to keep it pliable.

### Step 9: Build – up the Pontic



- Build-up the pontic using the common light curing C&B composite materials, follow the manufacturer instructions.



### Step 10: Final Adjustment



- Polish the attachments



### General Remarks for Working with Dentapreg™

- Dental stone model is a good training tool for trials of **Dentapreg™**,
- Avoid sharp edges and undercuts on the model,
- Before forming **Dentapreg™** strip on a model, always apply separation liquid or wax,
- Always use the widest clinically acceptable **Dentapreg™** strip,
- During forming and adaptation of the **Dentapreg™** strip advance slowly from one end to the other to allow for a good adaptation of the fibrous reinforcement and small flow of the resin to avoid defects and shape memory effect,
- To minimize potential damage to the fibers, is recommended to use plastic instruments used to work with dental filling composites,

- When preparing the strip (measuring, trimming), keep the strip in its original transparent protection foil to avoid contamination,
- Avoid sharp edges and extremely small interproximal curvatures when forming **Dentapreg™** strips to prevent fiber breakage,
- Most commercially available light or dual curing dental adhesives can be used to bond **Dentapreg™** strips
- Adhere strictly to the acid etching and adhesive curing procedures recommended by the etching agent and adhesive manufacturers,
- Polishing or sand blasting of cured **Dentapreg™** should be avoided, to enhance patient comfort and maintain good hygienic conditions, a layer of light curing hybrid composite can be deposited on the **Dentapreg™** surface and polished using standard procedures.