



Dentapreg™ Repair - Procedures

Basic Procedures in Short

Reinforcing of removable dentures with Dentapreg™ strip always includes several basic procedures repeated in all particular clinical situations:

- (A) Treatment of removable denture
- (B) Measure the length of used Dentapreg™ Repair
- (C) Remove Dentapreg™ from the blister
- (D) Cut Dentapreg™ with regular scissors
- (E) Light cure the strip
- (F) Apply a thin layer of denture base resin
- (G) Place cured Dentapreg™ strip into the denture base resin
- (H) Cover the strip a thin layer of denture base resin
- (I) Polymerize the removable denture

Detailed Step-by Step Instruction for Reinforcing of Removable Denture

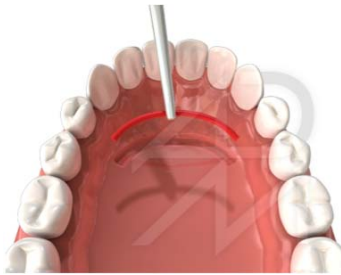
<i>Office / Laboratory</i>	Step 1: Removable Denture Manufacture
	<ul style="list-style-type: none">• Take an impression of the arch• Prepare the removable denture by usual way
	

Step 2: Treatment of Denture Base



- Prepare the canal for Dentapreg™ strip in required position

Step 3: Measure the Length of Strips

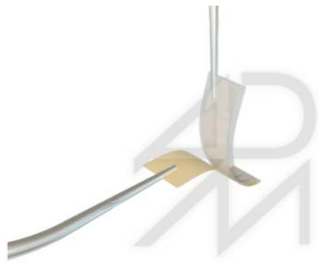


- Use dental floss or wax rope for measurement of required Dentapreg™ Repair strip length

Step 4: Prepare Dentapreg™ Repair Strip



- Separate the single strip from the blister breaking the perforated ligament similarly to blister packaged drugs. Use sharp instrument (scissors, knife, razor blade, scalpel) to open the aluminum foil along three sides.
- Remove the strip from the blister and cut it with regular scissors.
- Peel back the waxed paper
- Peel back the transparent foil. Place the trimmed strip into the light save box. This will prevent premature polymerization of the strip.



Step 5: Light Curing



- Insert Dentapreg™ strip to the prepared canal
- Light cure the strip. When using common light curing lamp, light cure the strip for 40 seconds.
- Remove the cured strip from the canal





Step 6: Denture Base Resin Application



- Apply a denture base resin to the prepared canal

Step 7: Dentapreg™ Strip Placing



- Insert cured Dentapreg™ strip to the resin dough in prepared canal

Step 8: Strip Covering



- Cover the Dentapreg™ strip with denture base resin

Step 9: Denture Base Polymerization



- Polymerize the repaired denture according to denture base resin manufacturer instructions

Step 10: Final Adjustment



- Final reinforced denture base resin