


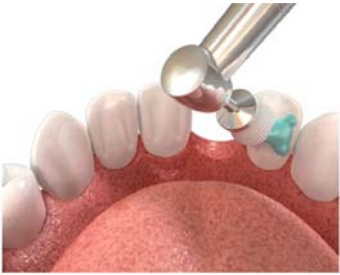
Dentapreg™ Bridge - Procedures

Basic Procedures in Short

Creating bridge framework with **Dentapreg™ strip** always includes several basic procedures repeated in all particular clinical situations:

- (A) Clean the bonding surface of abutment teeth
- (B) Maintain dry field during all procedures of placement the bridgework
- (C) Acid etch the bonding surface using common commercial etching gels or liquids
- (D) Apply thin layer of a desired adhesive and cure
- (E) Form and bond **Dentapreg™ Bridge**, cure it
- (F) Finish the bridgework

Detailed Step-by Step Instruction for Space Maintainer

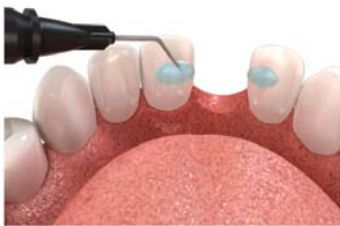
Office/Clinic	Step 1: Prepare Teeth
	<ul style="list-style-type: none">• Clean teeth• Assure dry field (rubber dam)
	

Step 2: Measure the Length of Dentapreg™ Strip



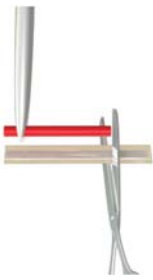
- Use dental floss or wax rope for this measurement
- Measure the required length of the Dentapreg™ strip. The length of the strip should be slightly longer than the final length of the framework to accommodate for the adaptation

Step 3: Apply Adhesive and Flow



- Place the wax or wedges in the interproximal spaces to keep good spatial and hygienic conditions
- Etch the bonding surfaces
- Apply consecutive coat(s) of adhesive to the abutments surfaces. Follow the adhesive manufacturer instructions
- Apply a thin layer of hybrid/flowable composite¹⁾ along desired maintaining area
- Do not light cure!

Step 4: Prepare Dentapreg™ Bridge Strip



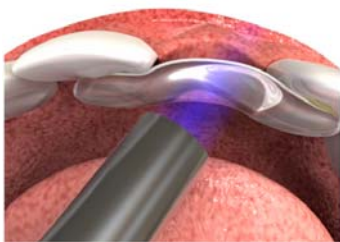
- Separate the single strip from the blister breaking the perforated ligament similarly to blister packaged drugs
- Use sharp instrument (scissors, knife, razor blade, scalpel) to open the aluminum foil along three sides
- Remove the strip from the blister, cut the strip with regular scissors and peel back the waxed paper and transparent foil
- Place the trimmed strip into the light save box. This will prevent premature polymerization of the strip.

Step 5: Adaptation of Dentapreg™ Strip



- Gently press Dentapreg™ strip on the bonding places against abutment teeth

Step 6: Light Curing



- Light cure the framework. When using common light curing lamp light cure each centimeter of the strip for 30 - 40 seconds

Step 7: Final Adjustment



- Mask the space maintainer

