

# MDL<sup>®</sup>

MINI DRIVE-LOCK



Straight

Custom

15° Angled

Wide

Orthodontic

Overdenture

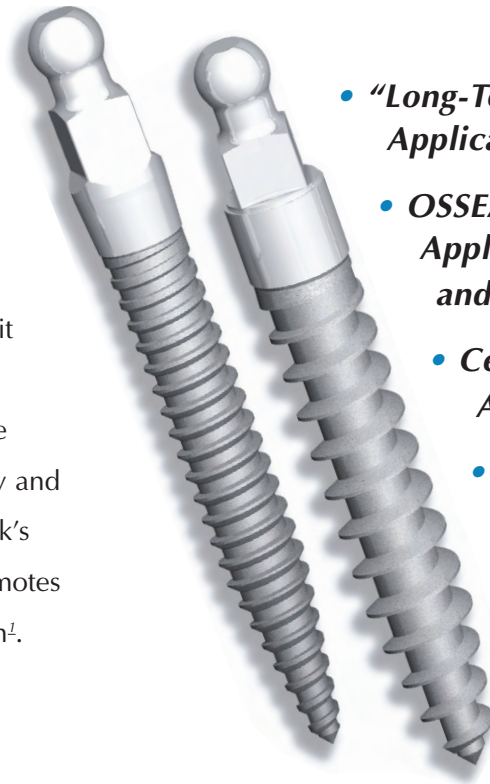
- “Long-Term” Applications
- Cement-Over Abutments
- Direct Delivery
- Bio-Active Surface

With  
**ossean<sup>®</sup>**  
SURFACE



# Mini Drive-Lock Implants *One Implant... Multiple Applications.*

**Mini Drive-Lock (MDL®)** is Intra-Lock's one-piece small diameter dental implant. The system is ideal for long-term denture stabilization or fixed prosthetics. MDL® is a true '**convertible**' implant with one-piece solid strength and two-piece versatility. Patented\* Cement-Over™ Abutments, simply fit over the O-Ball Assembly and convert the implant from removable to fixed or orthodontic treatment options. The system's unique Drive-Lock™ instruments reduce delivery and placement to one fluid motion. Once in place, Intra-Lock's extremely hydrophilic, bio-active **OSSEAN®** Surface promotes rapid early healing and increased biomechanical fixation<sup>1</sup>.



- **"Long-Term" Applications**
- **OSSEAN® Surface Applied to Collar and Body**
- **Cement-Over™ Abutments**
- **Direct Delivery**



**OSSEAN®** Surface is characterized by its fractal<sup>2</sup> topography that extends beyond the nanoscale level. **OSSEAN®** has an extremely hydrophilic surface and is impregnated with Calcium Phosphate molecules that are incorporated into the surface structure at the molecular level. Due to this molecular impregnation, binding forces make the Calcium Phosphate exceptionally stable while preserving its bioactive properties.

## All implants are packaged with the Micro Metal Housing with O-Ring.

MDL® Mini Drive-Lock Implants, 2.0mm Diameter, OSSEAN® Surface

*Length	10mm	11.5mm	13mm	15mm	18mm
Ref No.	MDL2010	MDL2011	MDL2013	MDL2015	MDL2018

MDL® Mini Drive-Lock Implants, 2.5mm Diameter, OSSEAN® Surface

*Length	10mm	11.5mm	13mm	15mm	18mm
Ref No.	MDL2510	MDL2511	MDL2513	MDL2515	MDL2518

MDL® Mini Drive-Lock Implants, 2.5mm Diameter, Long Collar, OSSEAN® Surface

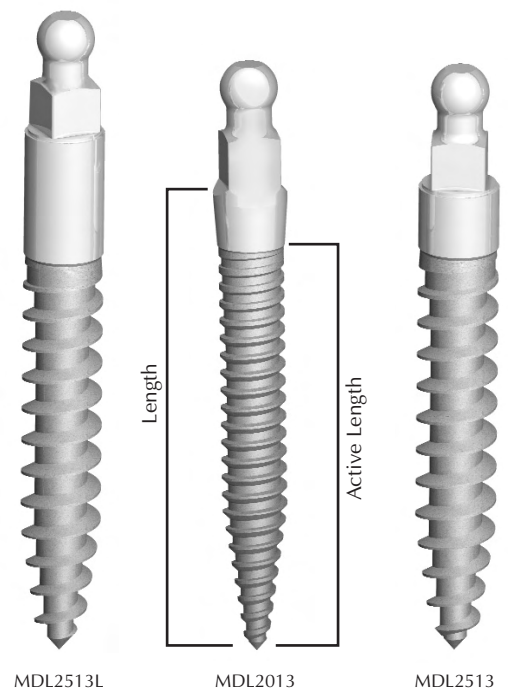
*Length	10mm	11.5mm	13mm	15mm	18mm
Ref No.	MDL2510L	MDL2511L	MDL2513L	MDL2515L	MDL2518L

MDL® Mini Drive-Lock Implant, 2.0mm Provisional, Non-OSSEAN®

*Length	13mm
Ref No.	MDL2013P

MDL® Mini Drive-Lock Implant, 2.5mm Provisional, Non-OSSEAN®

*Length	13mm
Ref No.	MDL2513P



MDL2513L

MDL2013

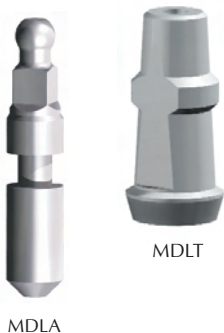
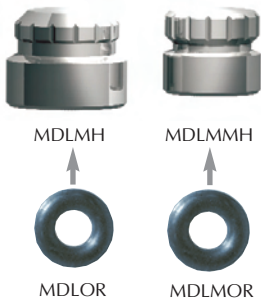
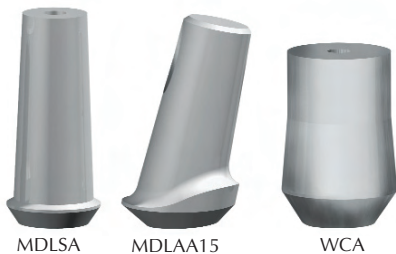
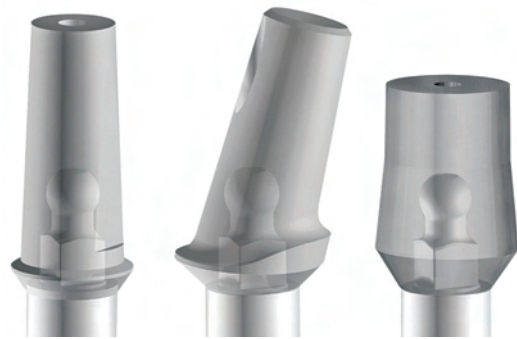
MDL2513

**\*The actual thread length is 2mm less than the catalog description, regardless of the height of the collar (2mm or 4mm).**

# Prosthetic Components

## Cement-Over™ Abutment System

**Cement-Over™ Abutments\***, available in Straight, 15° Angled, Wide, Plastic Castable, and Orthodontic configurations, provide the clinician with an unsurpassed range of prosthetic options. **Cement-Over™ Abutments\*** can be prepared extra orally and simply fit over the **O-Ball Assembly**. Once cemented in place with resin cement, abutment and implant form one unit; resistant and strong as a one-piece. An Analog and Impression Coping complement the system.



### Cement-Over™ Abutments

Ref No.

- Cements over O-Ball Assembly for fixed bridges  
Straight ..... MDLSA
- Cements over O-Ball Assembly for fixed bridges  
Angulated 15° ..... MDLAA15
- Cements over O-Ball Assembly for fixed bridges  
Wide ..... WCA
- Plastic Castable Abutment for fixed bridges ..... MDLPA
- Orthodontic Abutment fits over O-Ball Assembly ..... MDLOA

### Healing Abutments

- Plastic Healing Cap for Press Fit on O-Ball Assembly ..... MLHC

### Mini Drive-Lock Metal Housing with O-Ring

- O-Ring encapsulated in MICRO Metal Housing ..... MDLMMH
- O-Ring encapsulated in LARGE Metal Housing ..... MDLMH

### MDL® O-Ring Replacements

- For MICRO Housing (Quantity of 10) ..... MDLMOR
- For LARGE Housing (Quantity of 10) ..... MDLOR

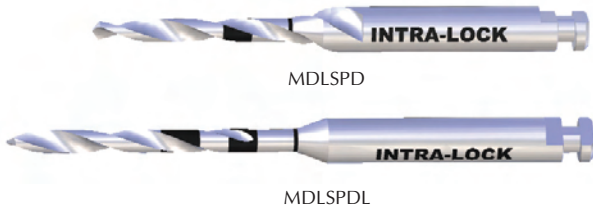
### Mini Drive-Lock Impression Coping

- Pick up Impression Coping ..... MDLT

### Mini Drive-Lock Laboratory Analog

- Replicates the MDL® Implant and Abutment ..... MDLA

# Drills, Implant Insertion Instruments



Ref No.

## Mini Drive-Lock Pilot Twist Drill

- Single Patient 1.2mm diameter - Sterile .....MDLSPD
- Single Patient 1.2mm diameter 13mm Long - Sterile .....MDLSPDL

## Implant Insertion Instruments

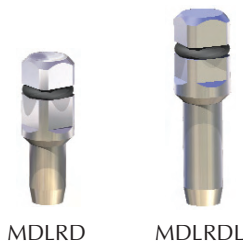
Predictable and efficient delivery and placement are achieved with **Drive-Lock™** technology. **MDL® Implants** can be removed from their sterile vial, transferred directly to the surgical site and threaded into place all in one fluid, ergonomic motion.

Ref No.



## Mini Drive-Lock Contra Angle Driver

- Contra Angle Driver ..... MDLCAD



## Mini Drive-Lock Ratchet Drivers

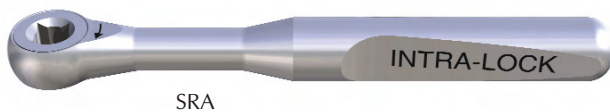
Use as an MDL® Hand Driver or with a Surgical Ratchet Wrench

- Mini Drive-Lock Ratchet Driver ..... MDLRD
- Mini Drive-Lock Ratchet Driver, Long..... MDLRDL



## Mini Drive-Lock Manual Wrench

- Connects to the Mini Drive-Lock Ratchet Driver..... MDLMW



## Surgical Ratchet Wrench

- With standard 4 x 4mm connection, autoclavable ..... SRA



## Tissue Punch

- Latch Tissue Punch ø3mm ..... RPCA3

### Drive-Lock™ Technology

- Package-to-Site, Direct Delivery
- Contra-Angle or Ratchet Driver
- Ergonomic Design

# Components and Ancillary Items

## Torque-Lock®



Small Diameter Implants demand initial stability and adequate insertion torque to ensure lasting success. Torque-Lock® Ratchet Wrench eliminates any guesswork. It can accurately determine torque forces from 10 to 50 Ncm. Torque-Lock® utilizes a patented technology of rubies and sapphires as bearing surfaces that provide minimal friction on the return stroke. They also resist the accumulation of blood and saliva and guarantees extremely consistent precision.

Ref No.  
TL

## Mini Drive-Lock Surgical Box



Accommodates all MDL® surgical instruments for MDL® Implant delivery and placement. Also accommodates MILO® Instrumentation.

- Laser etched Stainless Steel insert

Ref No.  
MLSK

## MDL® Patient Education Model



- Mandibular denture model excellent for patient education and marketing.
- Four implants, O-Rings and housing.

Ref No.  
MDLMOD



GLOBAL HEADQUARTERS  
6560 West Rogers Circle, Bldg. 24  
Boca Raton, Florida 33487 USA

**Tel: 877-330-0338**

**[www.intra-lock.com](http://www.intra-lock.com) • [info@intra-lock.com](mailto:info@intra-lock.com)**

Prior to the placement MDL® implants, appropriate and adequate training in all phases of MDL® Implant procedures is strongly recommended. A comprehensive patient interview, medical/dental history and a complete oral examination should be conducted. Diagnostic radiographs and mounted study models, if appropriate, should also be obtained.

Intra-Lock® is a registered trademark of Intra-Lock International, Inc.  
OSSEAN® is a registered trademark of Intra-Lock International, Inc.  
MDL® Mini Drive-Lock is a trademark of Intra-Lock International, Inc.  
Drive-Lock™ is a trademark of Intra-Lock International, Inc.

\*U.S. Patent 7,033,174 - U.S. Patent 7,217,130 - U.S. Patent 7,131,840 and other U.S. & Foreign Patents Pending.

<sup>1</sup> Marin C, Granato R, Suzuki M, Gil N, Piatetelli A, Cohelo P. Removal torque and histomorphologic evaluation of bioceramic grit blasted/acid-etched and dual acid-etched implant surfaces. An experimental study in dogs. J Periodontol. 2008, in press.

<sup>2</sup> Fractal: An object or quantity that displays self-similarity on all scales.